

# ENVIRO-THERM® THERMAL MANAGEMENT THERMOELECTRIC COOLERS

## Application

Enviro-Therm® Thermoelectric Coolers also known as Peltier units. Designed with an internal closed loop system, Thermoelectric coolers have very few moving parts and no piping, leaving less room for failure. The compact design is great for small enclosures. For indoor and outdoor applications. Protects from dust, oil and water. Rugged, energy efficient, and reliable cooling system minimizing downtime. For more details and installation information, consult our installation manual at [www.saginawcontrol.com](http://www.saginawcontrol.com).

## Construction

- Heavy gauge stainless steel.
- DC Powered for 24V applications.
- Mount vertically or horizontally.
- Filterless design reduces maintenance requirements.
- Contains no compressor or refrigerant, making it earth friendly.
- Pre-wired with simple terminal block for easy wiring connections.
- Operates on the Peltier effect for cooling or heating.
- Terminal block connection.
- Operating temperature range from -4°F to 149°F.

## Electrical

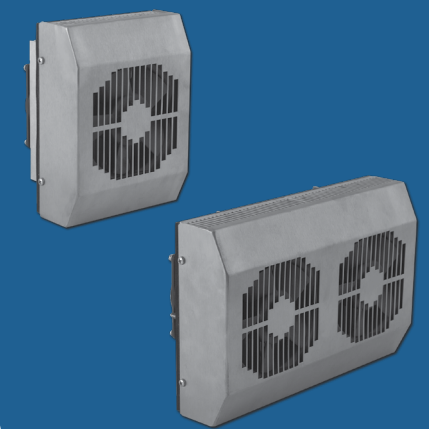
- cULus Listed
- CE

## Finish

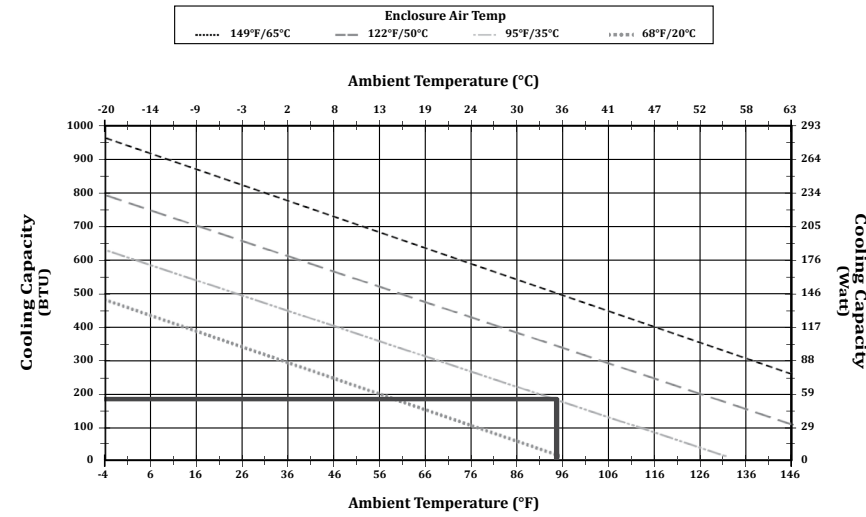
#4 brushed finish 304 Stainless Steel

## IS20 Industry Standards

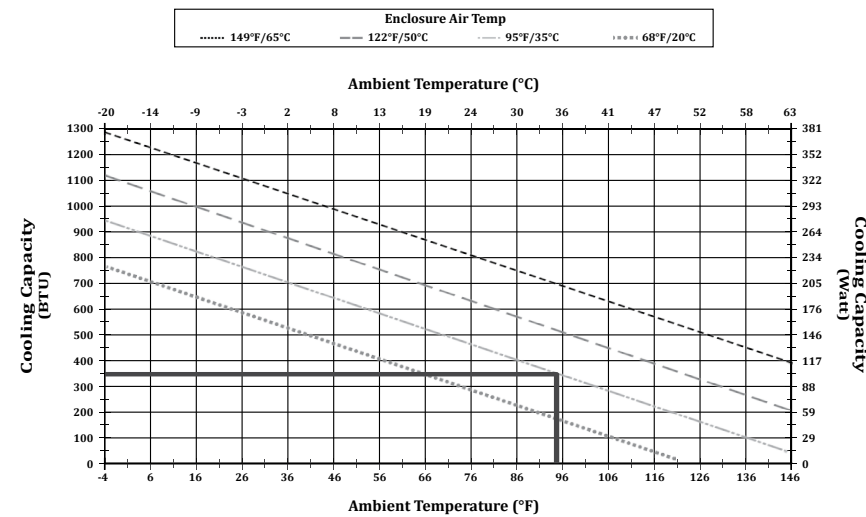
UL Recognized Type 3, 3R, 4, 4X & 12  
IEC 60529 IP56



Catalog No.	Height (A)	Width (B)	Depth (C)	BTU 95° @ 95°	Voltage	Line Amps	Startup Amps
<a href="#">SCE-TE170B24VSS</a>	8.11	6.06	5.32	170	24 VDC	2.4	3.7

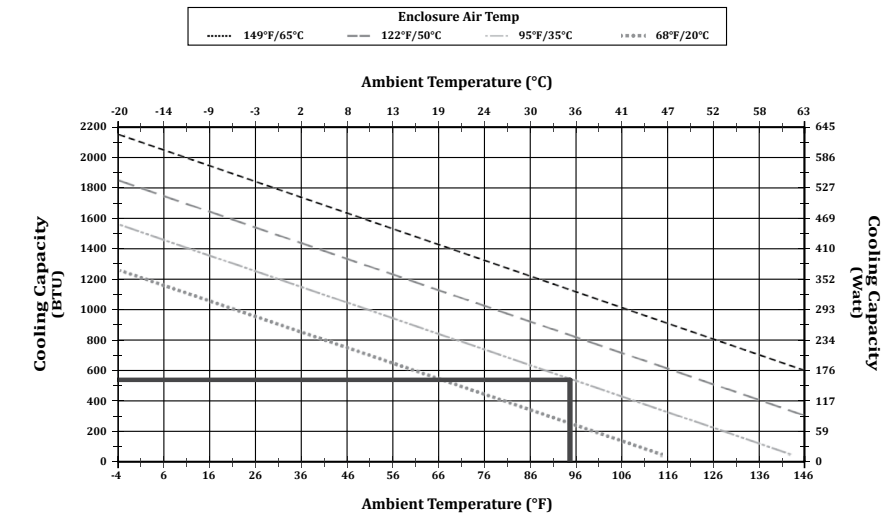


Catalog No.	Height (A)	Width (B)	Depth (C)	BTU 95° @ 95°	Voltage	Line Amps	Startup Amps
<a href="#">SCE-TE340B24VSS</a>	7.87	11.97	5.43	340	24 VDC	4.8	7.4



# ENVIRO-THERM® THERMAL MANAGEMENT THERMOELECTRIC COOLERS

Catalog No.	Height (A)	Width (B)	Depth (C)	BTU 95° @ 95°	Voltage	Line Amps	Startup Amps
<a href="#">SCE-TE510B24VSS</a>	15.75	7.09	6.73	510	24 VDC	7.0	11.0



Catalog No.	Height (A)	Width (B)	Depth (C)	BTU 95° @ 95°	Voltage	Line Amps	Startup Amps
<a href="#">SCE-TE680B24VSS</a>	15.75	7.09	6.73	680	24 VDC	10.8	17.0

